

THE BOND BUSINESS SUITES



**FOR LEASE: Class A Office Suite
Entire 2nd Floor**

CORNER OF BOND & GREENWOOD • DOWNTOWN BEND

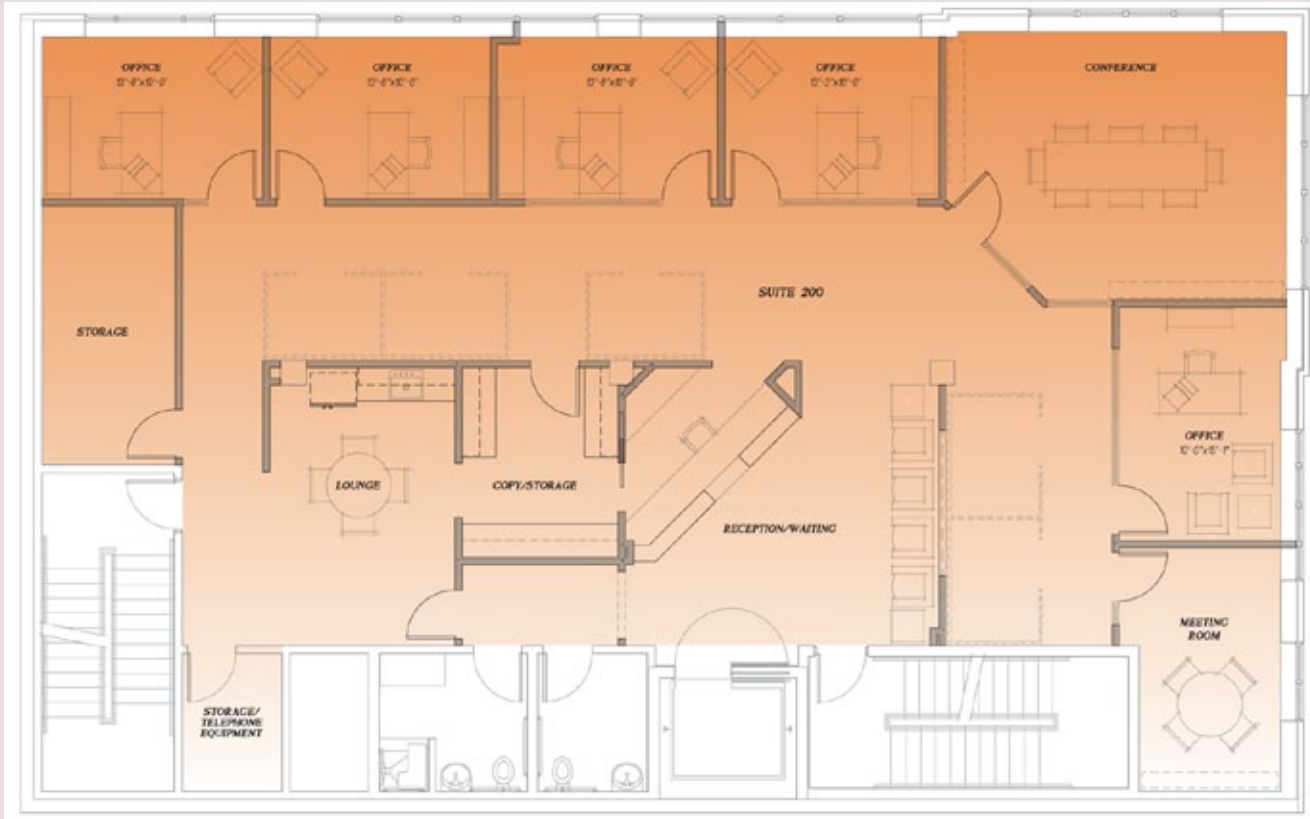
SIZE: 3,752 SF RATE: \$1.50/SF/Mo. NNN

NNN= \$0.60 Including Utilities

- ❑ **7 Offices, Conference Room and Lounge**
- ❑ **Access from the Deschutes County courthouse and numerous banks**
- ❑ **Featuring The Decoy Bar and Grill**
- ❑ **Centennial Parking Garage is 2 blocks away**



CLASS A OFFICE 2ND FLOOR



SECOND FLOOR PLAN — 3,752 SF



Enjoy the privacy and exclusivity of an entire building floor dedicated to your business. Exit the elevator or stairs and enter directly into your private office. The space will be built with green building principles for a healthy working environment. Seven offices and an impressive conference room surround open work spaces and a lounge. Take pride in seeing your company logo on the large building sign on the corner of Bond & Greenwood across from the Deschutes County Courthouse.

Your business will thrive at this trophy Class A office property in the heart of downtown Bend. Your clients, prospects and employees will appreciate your sense of style. Your accountant will applaud you for the affordable lease rates.

Move up in the world. Move into The Bond.



Darren Powderly, CCIM | 541.383.2444

600 sw Columbia St., Suite 6100 | Bend, Oregon 97702
tel 541.383.2444 | fax 541.383.5162 | www.compasscommercial.com