

**FOR SALE**

**1.87 AC | \$975,000**

**Light Industrial Land in Bend**

20875 Redside Ct., Bend, OR 97701



**PROPERTY DETAILS**

**Land Size:** 1.87 AC  
**Sale Price:** \$975,000  
**Price/SF:** \$11.97  
**Zoning:** Light Industrial (IL)

**Robert Raimondi, CCIM**

600 SW Columbia St., Ste. 6100 | Bend, OR 97702

**541.383.2444** | [www.CompassCommercial.com](http://www.CompassCommercial.com)

**COMPASS**  
COMMERCIAL

**REAL ESTATE SERVICES**

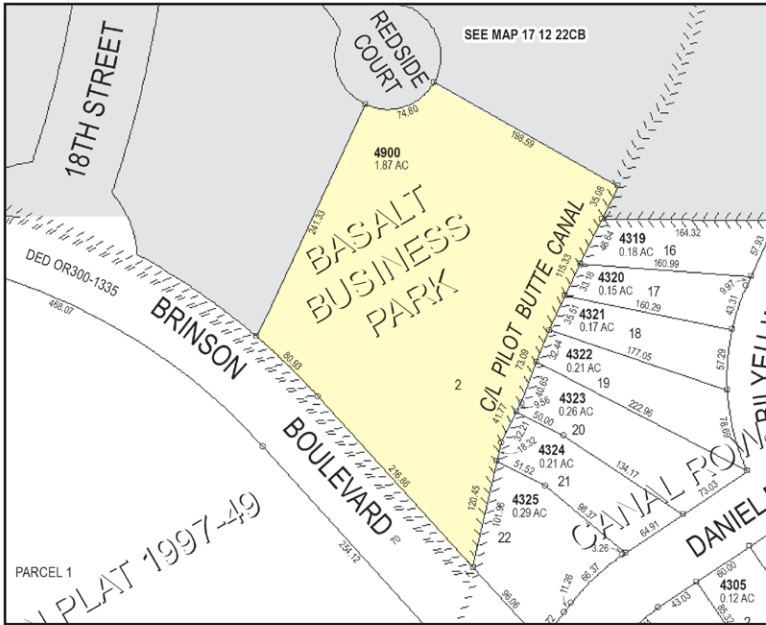


# FOR SALE

## 1.87 AC | \$975,000

### Light Industrial Land in Bend

20875 Redside Ct., Bend, OR 97701



### HIGHLIGHTS

- Basalt Industrial Park Lot 2
- Utilities to the site
- Clean Phase 1 Environmental Site Assessment
- Located in Bend's Enterprise Zone
- Graded and ready to develop
- One of the last remaining light industrial lots on Bend's north end
- Quick access to Highway 97 (north/south) and Highway 20 (west)



Brokers are licensed in the state of Oregon. This information has been furnished from sources we deem reliable, but for which we assume no liability. This is an exclusive listing. The information contained herein is given in confidence with the understanding that all negotiations pertaining to this property be handled through Compass Commercial Real Estate Services. All measurements are approximate.



**Robert Raimondi, CCIM**  
Broker  
Cell 541.771.2020  
rraimondi@compasscommercial.com

**COMPASS**  
COMMERCIAL

**REAL ESTATE**  
SERVICES